



CONSTRUCTION

CHEVRON LUBRICANTS CAN HELP YOU **RUN BETTER LONGER**



LUBRICANTS FOR THE CONSTRUCTION INDUSTRY

Discover Groundbreaking Reliability

Equipment breakdown, fuel costs and budget management are challenges that require flexibility for your construction operation. Chevron specialists understand construction operational challenges and can work with you to help you improve reliability and efficiency of your equipment. Using Chevron lubricants in your mobile equipment can help increase productivity and minimize costly downtime, so you can continue to deliver projects on time. With our powerful combination of premium lubricants and superior industry knowledge, we can help you reduce operating costs and build a better return on your investment.

Partner with Chevron to help you reach the potential to:

- Maximize Engine Durability
- Extend Service Protection
- Improve Supplier Performance
- Improve Fuel Efficiency



Delo® TorqForce



REACH A NEW LEVEL OF RELIABILITY WITH THE RBL™ PROGRAM

Reliability matters at every step of the value chain. Chevron specialists can help add even more value to your lubrication program by providing expertise along with world-class products and targeted services – all working in sync to help you get the most out of your equipment and operations, time and time again.

To learn more, contact your marketer.



CHEVRONLUBRICANTS.COM/RBL

PRODUCTS

ENGINE OILS	GRADES
Delo® 400 LE Synthetic For naturally aspirated and turbo-charged, four-stroke diesel engines and four-stroke gasoline engines, in which API CJ-4 or SM service categories are recommended.	SAE 5W-40
Delo 400 LE Synthetic For naturally aspirated and turbo-charged four-stroke diesel engines and four-stroke gasoline engines in which the API CJ-4 or SN service categories are recommended.	SAE 5W-30
Delo 400 XLE Synblend For naturally aspirated and turbo-charged four-stroke diesel engines and four-stroke gasoline engines in which the API CJ-4 or SN service categories are recommended.	SAE 15W-40
Delo 400 XLE Synblend For naturally aspirated and turbo-charged four-stroke diesel engines and four-stroke gasoline engines in which the API CJ-4 or SM service categories are recommended.	SAE 10W-30
Delo 400 LE Specially formulated for low emission diesel engines with diesel particulate filters and burning Ultra Low Sulphur Diesel fuel, in which API CJ-4 or SM service category is recommended.	SAE 15W-40
Delo 400 SD For naturally aspirated and turbo-charged four-stroke diesel engines and four-stroke gasoline engines in which the API CJ-4 or SM service categories are recommended.	SAE 15W-30

TRANSMISSION FLUIDS	GRADES
Delo Syn-Trans HD A heavy-duty truck manual transmission fluid recommended for service fill of heavy duty manual transmissions, such as those manufactured by Eaton, Meritor and Mack.	SAE 50
Delo Trans ESI® For use in heavy-duty manual transmissions, such as those manufactured by Eaton and Meritor.	SAE 40
Delo TorqForce™ Designed for use in transmissions, final drives and hydraulic systems. Meets requirements of Allison C-4 and Caterpillar TO-4. Recommended for Dana Powershift, Komatsu KES 07.868.1 and Komatsu Dresser.	SAE 10W, 30, 50, 60
Delo TorqForce Syn Designed for use in transmissions, wet brakes, and hydraulic systems. Meets Caterpillar TO-4 and Allison C-4 requirements. Recommended for Dana Powershift, Komatsu KES 07.868.1 and Komatsu Dresser.	SAE 5W-20
Delo TorqForce MP Designed for use in transmissions, wet brakes and hydraulic systems. Meets requirements of Allison C-4 and Caterpillar TO-4 and TO-4M. Recommended for Dana Powershift, Komatsu KES 07.868.1 and Komatsu Dresser.	



Always confirm that the product selected is consistent with the original equipment manufacturer's recommendation for the equipment operating conditions and customer's maintenance practices.

HYDRAULIC OILS	GRADES
<p>Clarity® Synthetic Hydraulic Oil AW Chevron's best synthetic ashless AW hydraulic oils are designed to give maximum protection, help prevent formation of varnish, as well as promote long equipment and oil life and help improve fuel efficiency. Clarity Synthetic AW hydraulic oils can deliver all these benefits in both mobile and stationary hydraulic equipment in environmentally sensitive areas.</p>	ISO 32, 46, 68
<p>Clarity Hydraulic Oil AW Premium ashless hydraulic oils that provide long oil and equipment life to help prevent varnishing with very low acute aquatic toxicity.</p>	ISO 22, 32, 46, 68, 100
<p>Rando® HDZ Premium AW hydraulic oils formulated with premium base oil technology designed for excellent protection while providing some energy efficiency relative to traditional hydraulic oils.</p>	ISO 15, 22, 32, 46, 68, 100
<p>Rando HD Designed to give robust protection to hydraulic pumps in mobile and stationary equipment.</p>	ISO 32, 46, 68
<p>ISO 100, 150, or 220 are often recommended for hydraulic equipment reduction gears where EP is not required, reciprocating air compressors, plain and anti-friction bearings, and circulating oil systems.</p>	ISO 100, 150, 220

GEAR LUBRICANTS	GRADES
<p>Meropa® Synthetic EP Synthetic EP gear lubricants recommended for many types of enclosed industrial gearboxes operating under severe service conditions.</p>	ISO 150, 220, 320, 460, 680
<p>Meropa XL Synthetic blend, premium industrial gear oil with excellent micropitting wear protection, demulsibility, seal and paint compatibility as required by its Siemens MD (Flender) Revision 13 approval.</p>	150, 220, 320, 460
<p>Meropa Premium quality extreme pressure gear oils with excellent load carrying capacity, water demulsibility, oxidation stability and corrosion protection.</p>	ISO 68, 100, 150, 220, 320, 460, 680, 1000, 1500
<p>Delo® Syn-Gear HD For rear axles and differentials in over-the-road and off-road vehicles when operating under severe conditions and extreme environments where API GL-4, GL-5 or MT-1 oil is recommended.</p>	SAE 75W-90, 80W-140
<p>Delo Gear ESI® For automotive gears operating under severe temperature and load conditions where API GL-4, GL-5, or MT-1 is recommended and when extended drain capabilities are desired.</p>	SAE 80W-90, 85W-140
<p>Ultra Gear Borated gear oil for construction and industrial gears, particularly those operating under high shock load conditions.</p>	ISO 68, 150, 220, 320, 460, 680

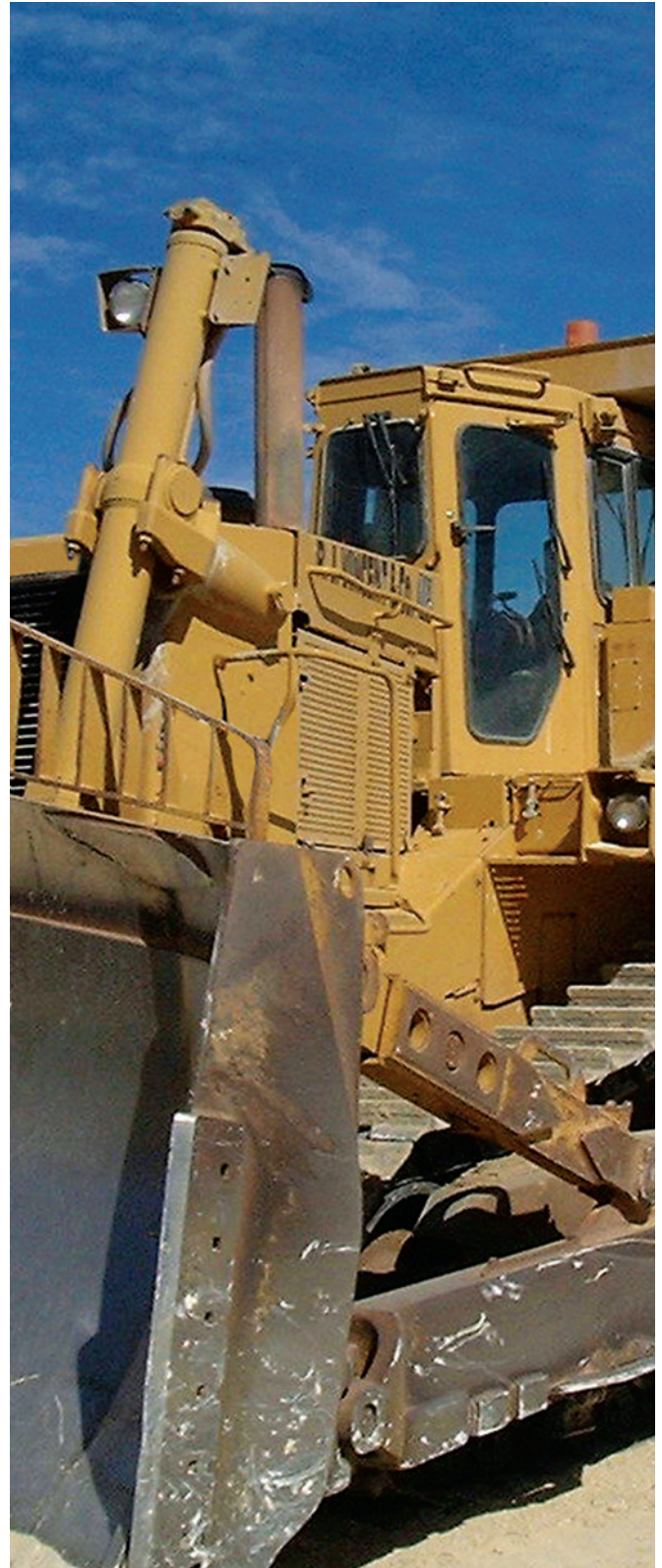
COMPRESSOR OILS	GRADES
<p>Cetus® HiPerSYN® Synthetic compressor oils (not to be mixed with PAG) recommended for air compressors; especially portable and stationary rotary, vane and screw compressors.</p>	ISO 32, 46, 68, 100, 150, 220, 320, 460
<p>Regal® R&O For most compressors where OEM requires an R&O type circulating oil.</p>	ISO 22, 32, 46, 68, 100, 220, 320, 460, 680

Always confirm that the product selected is consistent with the original equipment manufacturer's recommendation for the equipment operating conditions and customer's maintenance practices.

PRODUCTS

COOLANTS	CONCENTRATION
<p>Delo® ELC Antifreeze/Coolant For use in a wide variety of cooling system applications that require nitrite including on-road, off-road and stationary engine applications.</p>	<p>Concentrate Premixed 50/50 Premixed 60/40</p>
<p>Delo XLC Antifreeze/Coolant For use in a wide variety of cooling system applications that require a nitrite-free product including on-road, off-road and stationary engine applications.</p>	<p>Concentrate Premixed 50/50</p>

GREASES	GRADES
<p>Delo Syn-Grease™ SxD 220 Moly 5% EP For demanding off-road construction applications with excellent performance throughout a wide temperature range, especially where very cold climates are encountered.</p>	NLGI 1
<p>Delo Grease ESI® HD, Moly 3% EP and Moly 5% EP For use in a wide variety of off-road construction applications, including all types of heavy-duty earth moving machinery.</p>	NLGI 1, 2
<p>Delo Grease ESI® EP Extended service, extreme duty grease for both on-highway and light-duty, off-road vehicle applications.</p>	NLGI 2
<p>Delo Grease EP For extreme duty in a wide variety of on- and off-highway vehicle and equipment applications.</p>	NLGI 00, 0, 1, 2
<p>Multifak® EP General-purpose EP grease for use in automotive and industrial equipment under most conditions, except where very high operating temperatures are encountered.</p>	NLGI 0, 1, 2
<p>Ulti-Plex® Synthetic Grease EP For extreme pressure bearing applications operating under high and low temperatures.</p>	NLGI 1.5



Always confirm that the product selected is consistent with the original equipment manufacturer's recommendation for the equipment operating conditions and customer's maintenance practices.

ISOCLEAN Certified Lubricants

Particle contamination is the number one cause of lubricant related wear in equipment components. Starting with a lubricant that is certified to meet the equipment manufacturer's fluid cleanliness requirement is the vital first step in maximizing equipment component service life.

Chevron ISOCLEAN Certified Lubricants have been engineered to meet the required ISO Cleanliness fluid requirements at the point of delivery to minimize the challenges with on-site filtration.

Chevron's network of ISOCLEAN Certified Lubricant providers ensure target ISO Cleanliness codes are on specification at point of delivery as well provide solutions for on-site management of fluid cleanliness.



Chevron offers a wide range of ISOCLEAN Certified Lubricants for the construction industry including:

- Delo® 400 LE SAE 15W-40
- Delo TorqForce
- Chevron Final Drive SAE 60
- Clarity® Synthetic AW
- Clarity AW
- Rando® HDZ
- Rando HD
- Meropa®
- GST®
- Cetus® DE
- Cetus HiPerSyn
- Cetus PAO





Chevron Reliability — The RBL™ Program is our commitment of business support and reliability: Chevron's lubrication expertise combined with superior products and a tailored service program work together to help your business Run Better Longer.

A **Chevron** company product

chevronlubricants.com